

matata  
studio

# FUN Coding Manual

for Musician Add-on + Coding Set





# Lesson 1

# Staff Notes and Pitches





---

[Orange rounded rectangle]

- >
- >

[Orange rounded rectangle]

[Orange rounded rectangle]

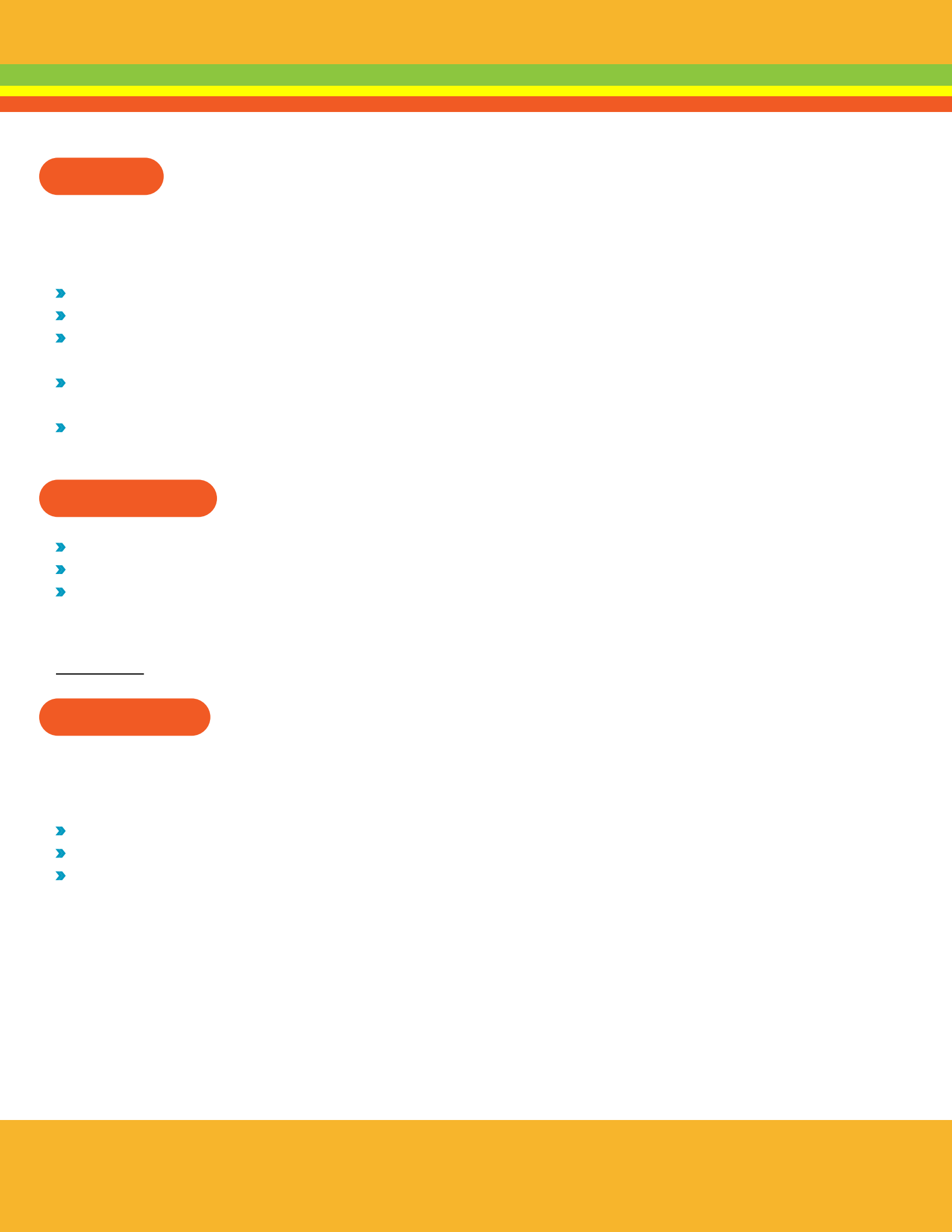
[Orange rounded rectangle]

- >
- >
- >
- >
- >
- >

[Orange rounded rectangle]

- >
- >
- >





- >
- >
- >
- >
- >

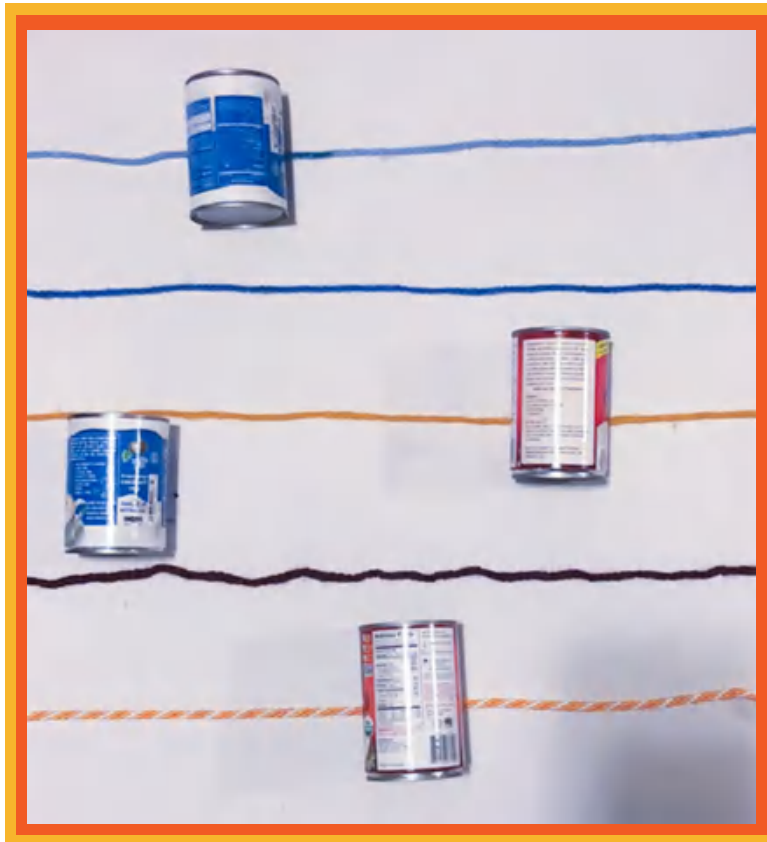


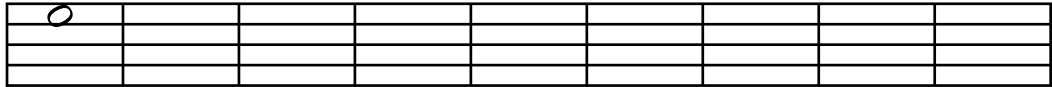
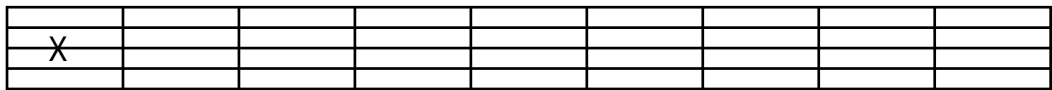
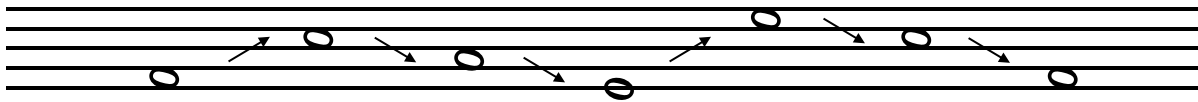
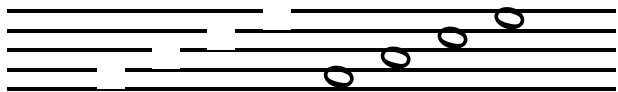
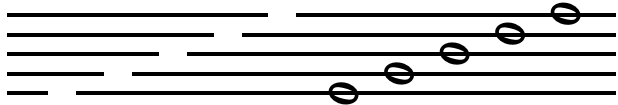
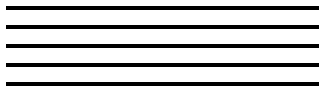
- >
- >
- >



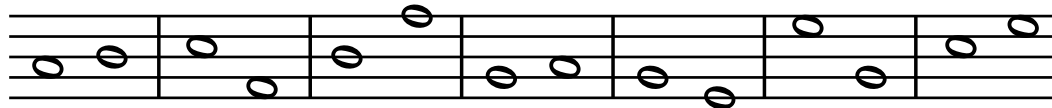
- >
- >
- >





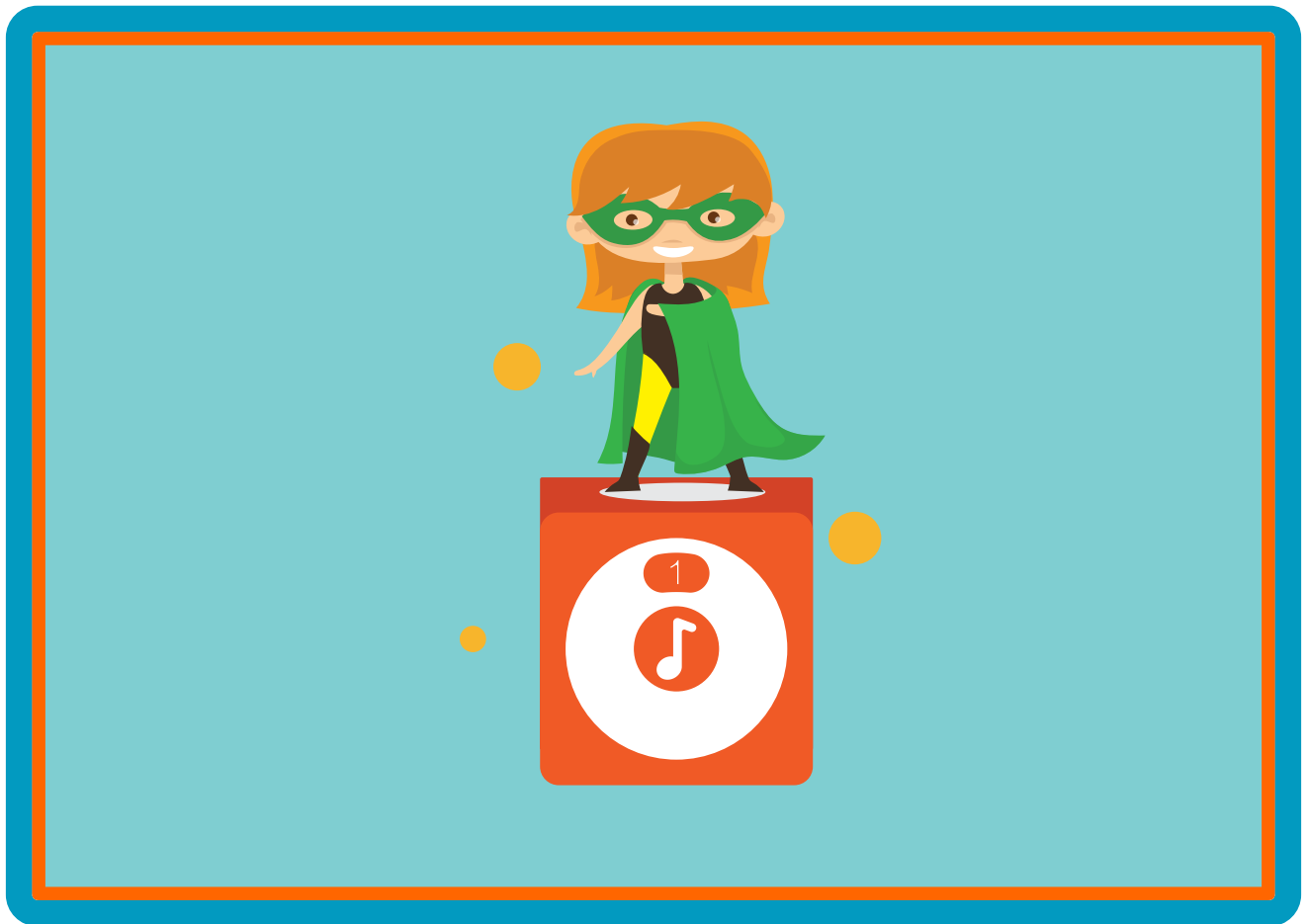


-



## Lesson 2

# Staff Note Names





---

Just like reading a book, music has a language. The language of music is placed on a staff. These are called notes and each note on the staff has a letter name. Some notes are also identified above and below the staff. In this lesson you will identify note names on the staff.

- » Review the five lines and four spaces that create the staff.
- » Identify the treble clef line and space note names.

K-2: MU:Cr1. 1.Ka, MU:Cr1. 1.1a, MU:Cr1. 1.2a.  
3-5: MU:Cr1. 1.3a, MU:Cr1. 1.4a, MU:Cr1. 1.5a

60 minutes

- » Staff Notes and Worksheets
- » Pencils
- » MatataStudio Coding Set
  - » Command Tower
  - » Control Board
  - » MatataBot
  - » MatataStudio Music Blocks

- » Copy "Treble Clef and Staff" worksheet
- » Staff paper
- » MatataStudio Music Coding Set pieces
- » Charge MatataStudio Command Tower and MatataBot

- Distribute \_\_\_\_\_ worksheet.
- Students will review the \_\_\_\_\_ lines and four spaces that create the staff.
- Students will identify the treble clef line note names and identify the phrases that work to help identify the names of the notes on the staff ( \_\_\_\_\_ very good boy goes fine and \_\_\_\_\_)
- Identify the line notes E, G, B, D, F and the line the note is located on the staff ( 1st line, 2nd line, etc.)
- Identify the space notes F, A, C, E and the space the note is located on the staff ( 1st space, 2nd space, etc.)
- Use one MatataStudio music block on the Control Board and turn the dial to "3" and press the play button.
- The sound that is heard is the note \_\_\_\_\_ on the 1st line of the staff.
- Use two music MatataStudio blocks. Dial one block to number "3"; dial one block to number "4". Students will identify which block is \_\_\_\_\_ on the line and \_\_\_\_\_ on the space.

- Students will complete exercises 1, 2, and 3.
- Students will be given MatataStudio music blocks and form pairs. Students will use the staff paper and draw the notes on the lines and spaces and create and write their own phrases to identify the notes. Example: Lined notes: very good burger deserves fries; Space Notes: independent look ggs.

---

Have the students answer the following questions:

- What are the letter line names for notes on the lines?
- What are the letter line names for notes on the spaces?
- What type of pitch is located in the Treble Clef?
- How many letters are used to identify music notes?

## Extensions

Create a template to identify notes on the lines and spaces by color. Are notes limited to the staff or should other colors be used to show notes above and below the staff?

The diagram illustrates a color-coding system for identifying notes on a musical staff. It features two staves, each with a treble clef. The first staff shows notes on the lines (E, F, G, D, F) and the second staff shows notes on the spaces (F, A, C, E). A legend at the bottom indicates that green circles represent notes on lines and red circles represent notes on spaces.

Legend:

- Lines (Green)
- Spaces (Red)

You may want to create a staff that is designed like your favorite food. How would you identify the notes in the lines and spaces?

## Real World Connections

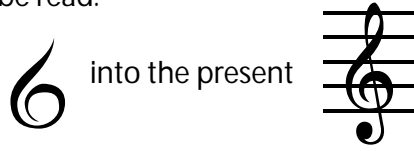
Have you ever been to an orchestra or performance? Did the musicians use music? Did everyone play the same thing? Did different musicians play different parts? Were the musicians limited to 9 notes? How do you think the music is created for an orchestra or band?

# Treble Clef and Sta

Music notes are named after the first seven letters of the alphabet, from A to G. By their position on the staff, they can represent the entire range of musical sound.

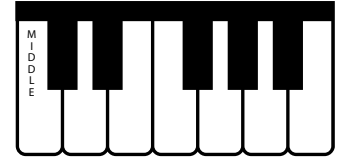
CLEF signs help to organize the staff so notes can easily be read.

The TREBLE CLEF is used for notes in the higher pitch ranges. The treble (or G) clef has evolved from a stylized letter G:

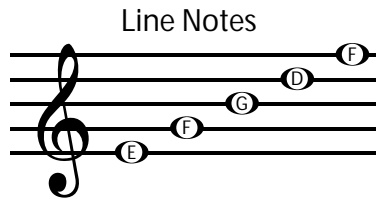


The curl of the treble clef circles the line on which the note G is placed. This G is above MIDDLE C (the C nearest the middle of the keyboard).

The TREBLE STAFF

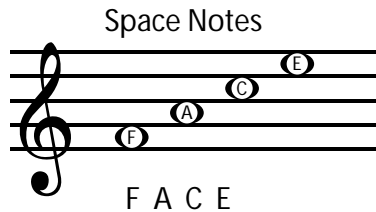


In the treble staff, the names of the notes on the lines from bottom to top are E, G, B, D, F.



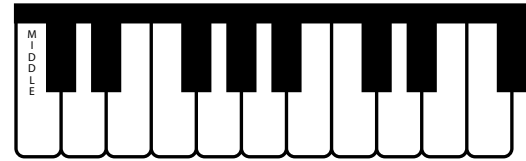
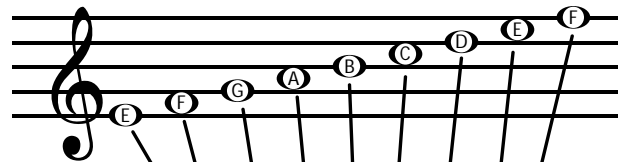
Evert Good Boy Does Fine

The names of the notes in the spaces from bottom to top spell FACE.



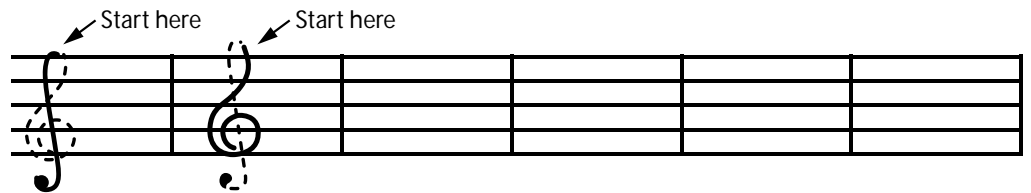
F A C E

All the notes of the TREBLE STAFF:

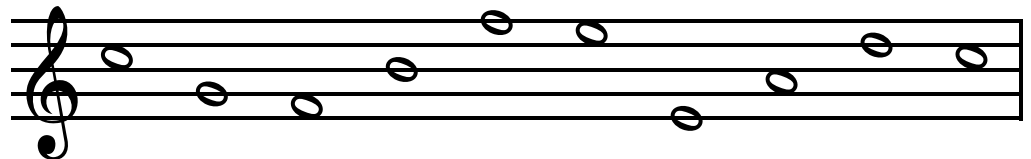


## Exercises

- The treble clef is written in two motions. Trace along the dotted lines as indicated then draw four more



- Write the letter names of the following notes. Use capital letters.



-----

- Write the notes on the staff indicated by the letters. If the notes can be written in two places, write one above the other.

